



STATE OF NORTH CAROLINA  
DEPARTMENT OF TRANSPORTATION

ROY COOPER  
GOVERNOR

JAMES H. TROGDON, III  
SECRETARY

July 20, 2017

Addendum No. 1  
RE: Contract Proposal RD-18001  
Wake County (M-0509)  
Capital Yard South Lead Extension

**July 27, 2017 Bid Opening**

To Whom it May Concern:

List of attendees to the mandatory pre-bid meeting held on 7/11/17 is posted on the project letting site.

Please download the document **“RD-18001 Contract Proposal – Addendum 1”** and submit your bids within that version. It includes all updates to the proposal outlined later and all updates are highlighted.

Questions received from bidders with responses:

1. Contract proposal page #17 under license requirements, it states that the contractor shall be prequalified for work codes 5010 and 5090. Is this correct or should it be “or” instead of “and”?
  - a. Response: Prime Contractor shall be prequalified for code 5010. Prime Contractor can either also be prequalified for code 5090 or list a prequalified sub to meet that portion of the requirement.
2. Are there any specialty items for this project?
  - a. Response: None have been identified and listed as such.
3. How much % of the work must the prime contractor complete?
  - a. Response: Refer to NCDOT Standard Specification 108-6 Subletting of Contract
4. Can you supply a track train schedule?
  - a. Response: There are four daily passenger trains that either depart or arrive at the NCDOT Capital Yard and will pass through the project limits. Times are approximately 0615, 1115, 1600, 2100
  - b. Response: There are also CSX freight train operations ongoing, the movement and frequency is dependent on CSX’s needs.
5. Will the contractor or Department be responsible for railroad flagging costs?

*Mailing Address:*  
NC DEPARTMENT OF TRANSPORTATION  
RAIL DIVISION  
1556 MAIL SERVICE CENTER  
RALEIGH, NC 27699-1556

*Telephone:* (919) 715-8803  
*Fax:* (919) 733-0997  
*Customer Service:* 1-877-368-4968  
*Website:* [www.ncdot.gov](http://www.ncdot.gov)  
[www.ncbytrain.org](http://www.ncbytrain.org)

*Location:*  
DESIGN & CONSTRUCTION  
862 CAPITAL BLVD  
RALEIGH, NC 27603

- a. Response: Department will pay CSX directly for flagging, but it is the Contractor’s responsibility to notify the Department and CSX at least 4 weeks in advance of when flagging is needed.
- 6. How is handling of contaminated non-haz material within the CSX ROW handled?
  - a. Response: Per CSX’s preference, all material generated from the project should stay on CSX ROW, within the project limits. In order to provide flexibility for CSX to determine the best location for this material, the project limits are extended north to near milepost S-155.0. If no suitable location is identified, the material has to be hauled off-site and should be hauled to a CSX approved disposal site as unclassified excavation. If material generated is suspected of being contaminated, the Contractor and Department will work with CSX’s Environmental Department to test and stockpile onsite. Remediation and disposal will not be part of this contract and will be performed by others.
- 7. Do material dollars count for the Prime Contractor’s 40%?
  - a. Response: Please refer to Standard Specification section 108-6 for requirements of performance of work and sub-letting of contracts.
- 8. What is the current project estimate?
  - a. Response: The engineer’s estimate is not provided during the advertisement period for the contract.
- 9. Please provide information on CSX’s approved ballast sources.
  - a. Response: See attached “Ballast Bifold” pages.
- 10. The Office of Civil Rights contact for information on the DBE goal and Good Faith Effort (GFE) requirement is Lisa Wilson (919-508-1926, lhwilson1@ncdot.gov).

Changes made to the Contract Proposal Document and Plans with Addendum 1

1. Contract Proposal cover sheet	Corrected a spelling error and railroad mileposts
2. Contract Proposal Project Special Provisions	<ul style="list-style-type: none"> <li>1. Inserted Contract Time SP and updated and added Intermediate Contract Times to better reflect coordination with CSX and Transflo</li> <li>2. Added Railroad Coordination SP based on coordination with CSX and revision to construction phasing.</li> <li>3. Updated Contractor’s License Requirements to denote that the requirement for Code 5090 may be made by a pre-qualified sub-contractor.</li> </ul>
3. Contract Proposal Rail Project Special Provisions	<ul style="list-style-type: none"> <li>1. TW-1: Phased Construction - Phases have been updated and a sentence about Contractor providing all materials for their work has been added.</li> <li>2. TW-1 Phase 1A – Revisions made to phasing description.</li> <li>3. TW-1 Phase 1B – Revisions made to phasing description.</li> <li>4. TW-1 Phase 1C – Phase added.</li> <li>5. TW-1 Phase 2 – Revisions made to phasing description.</li> <li>6. TW-1 Phase 3 – Phase Deleted.</li> </ul>

	7. TW-19 – added sentence expanding project limits for purpose of disposal of excess grading generated materials north to milepost S-155.0
4. Project Plans	1. Phasing plans revised, see sheets CG-02, CG-10, CG-11, CG-11A, & CG 12

If additional information is needed on this matter, please contact me at (919)707-4118 or [bsmythe@ncdot.gov](mailto:bsmythe@ncdot.gov).

BDS



## When it comes to railroad ballast, CSX has everything you need. Starting with the railroad.

**We have everything you need to fill your railroad ballast needs, starting with a 21,000-mile network that serves 19 different railroad ballast stone quarries. We have access to trap rock and granite, and can even provide aggregate hopper cars for your convenience. While most of our locations are capable of unit-train shipments, single-car and block shipments are also available.**

### **Augusta Quarry** (Granite)

Martin Marietta Materials  
3098 Superior Road  
Augusta, GA 30907  
706-860-1762  
[www.martinmarietta.com](http://www.martinmarietta.com)

### **Belle Mead Quarry** (Trap Rock)

Gibraltar Rock  
484 County Route 601  
Belle Mead, NJ 08502  
267-566-1804  
[www.silvi.com/Rock/gibraltar.asp](http://www.silvi.com/Rock/gibraltar.asp)

### **Cayce Quarry** (Granite)

Martin Marietta Materials  
2125 State Street  
Cayce, SC 29033  
803-796-8320  
[www.martinmarietta.com](http://www.martinmarietta.com)

### **Doswell Quarry** (Granite)

Martin Marietta Materials  
12068 Stone Quarry Road  
Doswell, VA 23047  
804-798-5096  
[www.martinmarietta.com](http://www.martinmarietta.com)

### **Erie Sand & Gravel** (Trap Rock)

Ontario Trap Rock  
Erie-Western Pa. Port Auth.  
208 East Bayfront Pkwy, Suite 201  
Erie, PA 16507  
705-785-3833  
[www.porterie.org](http://www.porterie.org)

### **Greystone Quarry** (Granite)

Vulcan Materials  
State Road 1508  
Greystone, NC 27536  
252-438-3161  
[www.vulcanmaterials.com](http://www.vulcanmaterials.com)

### **Winchester Junction** (Granite)

Martin Marietta Materials  
Georgia Highway 90  
Junction City, GA 31812  
706-860-1762  
[www.martinmarietta.com](http://www.martinmarietta.com)

### **Lithonia Quarry** (Granite)

Hanson Aggregates  
2375 Turner Hill Road  
Lithonia, GA 30058  
678-526-8535  
[www.heidelbergcement.com](http://www.heidelbergcement.com)

### **Notasulga Quarry** (Granite)

Vulcan Materials  
8938 Alabama Highway 14  
Loachapoka, AL 36865  
205-807-4221  
[www.vulcanmaterials.com](http://www.vulcanmaterials.com)

### **Boscobel Quarry** (Granite)

Luck Stone  
Boscobel Plant  
Luck, VA 23146  
804-784-5263  
[www.luckstone.com](http://www.luckstone.com)

### **Maryland Materials Quarry** (Granite)

Maryland Materials  
264 Quarry Road  
North East, MD 21901  
410-287-8177  
[www.marylandmaterials.com](http://www.marylandmaterials.com)

### **Lemon Springs Quarry** (Granite)

Martin Marietta Materials  
1227 Willet Road  
Sanford, NC 27330  
919-776-5157  
[www.martinmarietta.com](http://www.martinmarietta.com)

### **Skippers Quarry** (Granite)

Vulcan Materials  
1459 Quarry Road/ Rte 650  
Skippers, VA 23879  
434-848-4775  
[www.vulcanmaterials.com](http://www.vulcanmaterials.com)

### **Junction City Quarry** (Granite)

Anderson Columbia  
2158 Packing House Road  
Talbotton, GA 31827  
706-665-2764  
[www.andersoncolumbia.com](http://www.andersoncolumbia.com)

### **Mid-West Terminals** (Trap Rock)

Ontario Trap Rock  
1800 Water Street  
Toledo, OH 43604  
705-785-3833  
[www.tomlinsongroup.com/rock/rock.html](http://www.tomlinsongroup.com/rock/rock.html)

### **Rockingham Quarry**

Vulcan Materials  
353 Galestown Road  
Rockingham, NC 28379  
910-895-2415  
[www.vulcanmaterials.com](http://www.vulcanmaterials.com)

### **Tyrone Quarry** (Granite)

Hanson Aggregates  
100 Peggy Lane  
Tyrone, GA 30290  
770-964-1591  
[www.heidelbergcement.com](http://www.heidelbergcement.com)

### **Tyrone Quarry** (Granite)

Martin Marietta Materials  
245 Rockwood Road  
Tyrone, GA 30290  
770-487-4187  
[www.martinmarietta.com](http://www.martinmarietta.com)

### **Westfield Quarry** (Trap Rock)

J. S. Lane & Son  
311 East Mountain Road  
Westfield, MA 01085  
413-562-3694  
[www.jslane.com](http://www.jslane.com)



DRAWING NUMBER	DRAWING TITLE	SHEET NUMBER	DRAWING NUMBER	DRAWING TITLE	SHEET NUMBER	DRAWING NUMBER	DRAWING TITLE	SHEET NUMBER
	<b>GENERAL</b>			<b>CROSS SECTIONS</b>			<b>STRUCTURAL DETAILS</b>	
CG-01	TITLE SHEET	1	RX-01	CROSS SECTIONS, PTBYP 11+00 TO PTBYP 11+50	28	SD-01	PEACE ST. BRIDGE SECTION	57
CG-02	INDEX OF DRAWINGS	2	RX-02	CROSS SECTIONS, PTBYP 12+00 TO PTBYP 12+50	29	SD-02	PEACE ST. BRIDGE SECTION	58
CG-03	GENERAL NOTES	3	RX-03	CROSS SECTIONS, PTBYP 13+00 TO PTBYP 13+50	30	SD-03	NOT USED	59
CG-04	ABBREVIATIONS	4	RX-04	CROSS SECTIONS, PTBYP 14+00 TO PTBYP 14+50	31			
CG-05	SYMBOLS	5	RX-05	CROSS SECTIONS, PTBYP 15+00 TO PTBYP 15+50	32		<b>CIVIL PLANS</b>	
CG-06	KEY MAP	6	RX-06	CROSS SECTIONS, PTBYP 16+00 TO PTBYP 16+50	33			
CG-07	CONCEPT PLAN	7	RX-07	CROSS SECTIONS, PTBYP 17+00 TO PTBYP 17+50	34			
CG-08	SURVEY CONTROL	8	RX-08	CROSS SECTIONS, PTBYP 18+00 TO PTBYP 18+50	35			
CG-09	RAIL SCHEDULE	9	RX-09	CROSS SECTIONS, PTBYP 19+00 TO PTBYP 19+50	36	CP-01	GRADING PLAN - GRAVEL LOT	60
CG-10	RAIL CONSTRUCTION PHASE IA	10	RX-10	CROSS SECTIONS, PTBYP 20+00 TO PTBYP 20+50	37	CP-02	NCDOT MAINTENANCE SHED SITE WORK	61
CG-11	RAIL CONSTRUCTION PHASE IB	11	RX-11	CROSS SECTIONS, PTBYP 21+00 TO PTBYP 21+50	38			
CG-12	RAIL CONSTRUCTION PHASE IC	12	RX-12	CROSS SECTIONS, PTBYP 22+00 TO PTBYP 23+00	39		<b>CIVIL DETAILS</b>	
CG-13	RAIL CONSTRUCTION PHASE 2	13	RX-13	CROSS SECTIONS, PTBYP 23+50 TO PTBYP 24+50	40			
CG-14	RAIL CONSTRUCTION COMPLETED	14	RX-14	CROSS SECTIONS, PTBYP 25+00 TO PTBYP 25+50	41			
	<b>TRACK</b>		RX-15	CROSS SECTIONS, PTBYP 26+00 TO PTBYP 27+00	42	CD-01	DOUBLE SWING GATE AND FENCE	62
RC-01	TYPICAL SECTIONS	15	RX-16	CROSS SECTIONS, PTBYP 27+50 TO PTBYP 28+00	43			
			RX-17	CROSS SECTIONS, PTBYP 28+50 TO PTBYP 29+00	44		<b>EROSION CONTROL</b>	
RP-01	TRACK PLAN PTBYP 10+89.48 TO PTBYP 24+00.00	16	RX-18	CROSS SECTIONS, PTBYP 29+50 TO PTBYP 30+00	45	CA-01	EROSION CONTROL PLAN TITLE SHEET	63
RP-02	TRACK PLAN PTBYP 24+00.00 TO PTBYP 2 36+50.00	17	RX-19	CROSS SECTIONS, PTBYP 30+50 TO PTBYP 31+50	46	CA-02	SOIL STABILIZATION SUMMARY	64
RP-03	TRACK PLAN PTBYP 2 36+50.00 TO PTNCD5 46+52.92	18				CA-03	SOIL STABILIZATION TIMEFRAMES	65
RP-04	TRACK PROFILE PTBYP	19				CA-04	EROSION CONTROL PLAN WITH CONTOURS PTBYP 10+89.48 TO 24+00.00	66
RP-05	TRACK PROFILE PTTT, PTBYP2, PTNCDL	20		<b>TRACK DETAILS</b>		CA-05	EROSION CONTROL PLAN WITHOUT CONTOURS PTBYP 10+89.48 TO 24+00.00	67
RP-06	TRACK PROFILE PTNCD4, PTNCD5	21	RD-01	No. 8 TURNOUT	47	CA-06	EROSION CONTROL PLAN PTBYP 24+00.00 TO PTBYP 2 36+50.00	68
RP-07	TRACK PROFILE PTTRF1, PTTRF2, PTTRF3	22	RD-02	No. 10 TURNOUT	48	CA-07	EROSION CONTROL PLAN PTBYP 2 36+50.00 TO PTNCD5 46+52.92	69
RT-01	TRACK GEOMETRY DATA	23	RD-03	No. 15 TURNOUT	49			
RT-02	TRACK GEOMETRY DATA	24	RD-04	BALLAST AND ROADBED SECTIONS	50			
RT-03	TRACK GEOMETRY DATA	25	RD-05	TIE PLATE AND SPIKING PATTERNS	51			
RT-04	TRACK GEOMETRY DATA	26	RD-06	CLEARANCE DIAGRAM AND MATRIX	52			
RT-05	TRACK GEOMETRY DATA	27	RD-07	RAIL SECTIONS (132RE, 136RE, 141RE)	53			
			RD-08	RAIL SECTIONS (115RE, 122CB, 140RE)	54			
			RD-09	SUPERELEVATION TABLE AND TURNOUT GRADING	55			
			RD-10	ASPHALT CROSSING	56			

PROJECT NUMBER	LINE ITEM	CONTRACT DESIGNATOR	PHYSICAL ENTITY	WORK ELEMENT	DESIGNED BY B. DAWES	 <b>CSX TRANSPORTATION, INC.</b> ENGINEERING DEPARTMENT DESIGN & CONSTRUCTION JACKSONVILLE, FLORIDA	 <b>moffatt &amp; nichol</b> 4700 FALLS OF NEUSE ROAD, SUITE 300 RALEIGH, NORTH CAROLINA 27609 (919) 781-4626 VOICE (919) 781-4869 FAX (919) 781-1051	VAL. SEC.	CONTRACT NO.	NCDOT CAPITAL YARD SOUTH LEAD CSX S-LINE FROM HARRINGTON TO NCDOT CAPITAL YARD RALEIGH, WAKE, NORTH CAROLINA  INDEX OF DRAWINGS
					DRAWN BY C. POWELL			L-7	54-DO-11708198	
					CHECKED BY G. MODLIN		DRAWING NO.	CG-02		
					APPROVED BY T. REID		REVISION	SHEET NO.		
REV	DATE	DESCRIPTION	BY	APP	DATE	JULY 14, 2017	0	2	SCALE	N.T.S.

**LEVEL 4**

Information confidential  
 all plans, drawings, spec-  
 ifications, and/or infor-  
 mation furnished herewith  
 shall remain the property  
 of the CSX Transportation  
 and shall be held con-  
 fidential and shall not be  
 used for any purpose not  
 provided for in agreements  
 with the CSX Transportation.

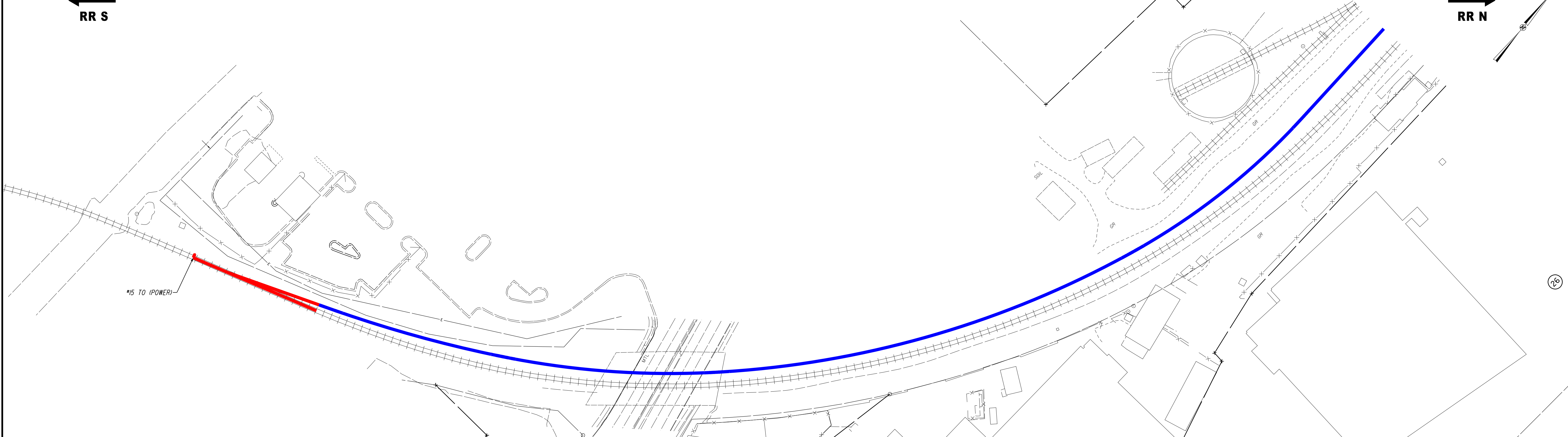


CP SOUTHERN JUNCTION, NC

CP EDGETON, NC

RR S

RR N

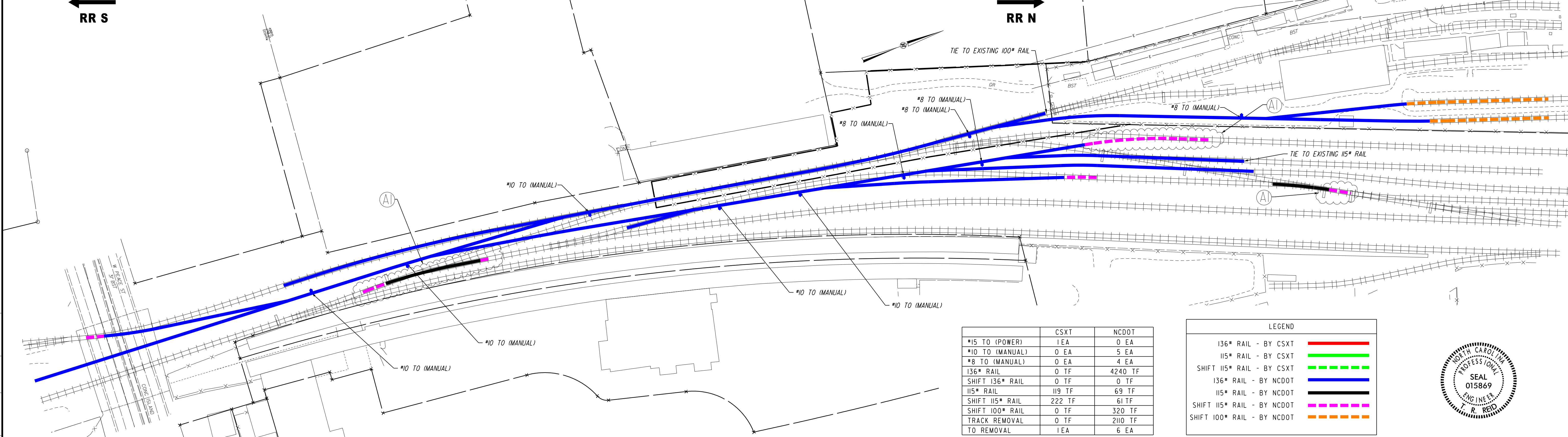


CP SOUTHERN JUNCTION, NC

CP EDGETON, NC

RR S

RR N



	CSXT	NCDOT
#15 TO (POWER)	1 EA	0 EA
#10 TO (MANUAL)	0 EA	5 EA
#8 TO (MANUAL)	0 EA	4 EA
136" RAIL	0 TF	4240 TF
SHIFT 136" RAIL	0 TF	0 TF
115" RAIL	119 TF	69 TF
SHIFT 115" RAIL	222 TF	61 TF
SHIFT 100" RAIL	0 TF	320 TF
TRACK REMOVAL	0 TF	2110 TF
TO REMOVAL	1 EA	6 EA

LEGEND	
136" RAIL - BY CSXT	
115" RAIL - BY CSXT	
SHIFT 115" RAIL - BY CSXT	
136" RAIL - BY NCDOT	
115" RAIL - BY NCDOT	
SHIFT 115" RAIL - BY NCDOT	
SHIFT 100" RAIL - BY NCDOT	



PROJECT NUMBER	
COST ELEMENT	
LINE ITEM	
CONTRACT DESIGNATOR	
PHYSICAL ENTITY	
WORK ELEMENT	

REV	DATE	DESCRIPTION	BY	SUB	APP
AI	7/14/17	REVISED PHASING/CONSTRUCTION			

# LEVEL 4

Information confidential all plans, drawings, specifications, and/or information furnished herewith shall remain the property of the CSX Transportation and shall be held confidential and shall not be used for any purpose not provided for in agreements with the CSX Transportation.

DESIGNED BY	B. DAWES
DRAWN BY	B. DAWES
CHECKED BY	G. MODLIN
APPROVED BY	T. REID
DATE	JULY 14, 2017

**CSX TRANSPORTATION, INC.** ENGINEERING DEPARTMENT  
 DESIGN & CONSTRUCTION  
 JACKSONVILLE, FLORIDA

**moffatt & nichol**  
 4700 FALLS OF NEUSE ROAD, SUITE 300  
 RALEIGH, NORTH CAROLINA 27609  
 (919) 781-4626 VOICEMAIL (919) 781-4869 FAX (919) 781-1051

VAL. SEC.	L-7
-----------	-----

CONTRACT NO.	54-DO-11708198
DRAWING NO.	CG-09
REVISION	AI
SHEET NO.	9
SCALE	1"=60'

NCDOT CAPITAL YARD SOUTH LEAD  
 CSX S-LINE FROM  
 HARRINGTON STREET TO NCDOT CAPITAL YARD  
 RALEIGH, WAKE, NORTH CAROLINA

RAIL SCHEDULE



CP SOUTHERN JUNCTION, NC

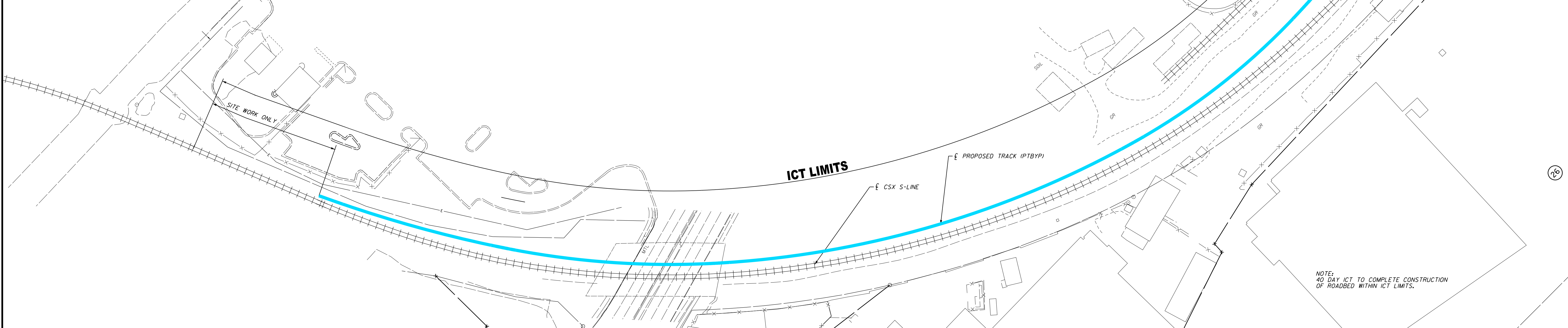
RR S

CP EDGETON, NC

RR N

# PHASE 1A

SEE ICT #1

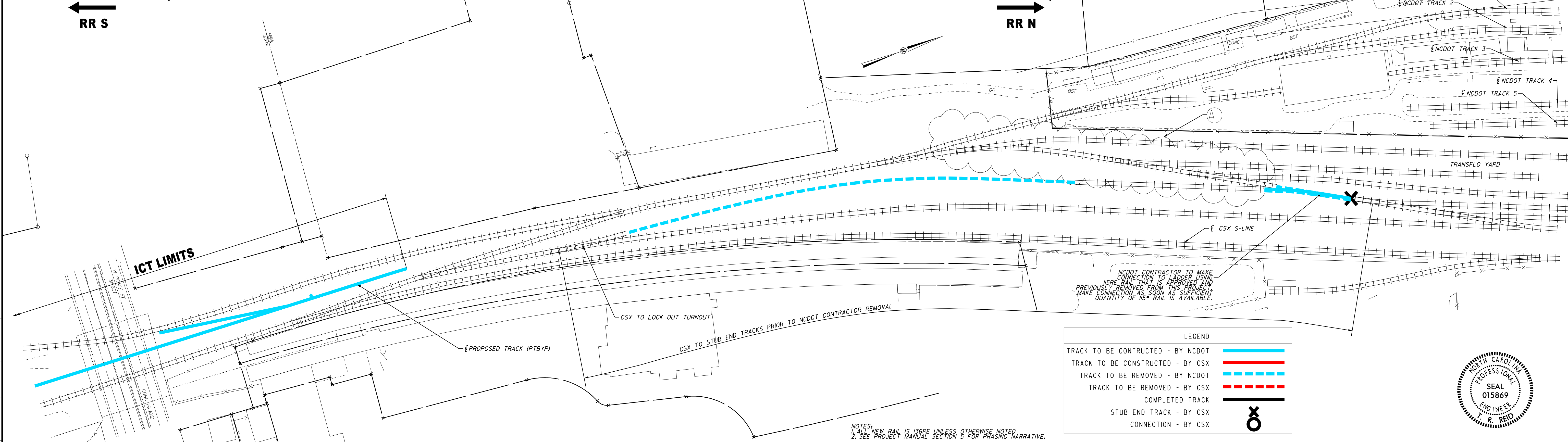


CP SOUTHERN JUNCTION, NC

RR S

CP EDGETON, NC

RR N



LEGEND	
TRACK TO BE CONSTRUCTED - BY NCDOT	
TRACK TO BE CONSTRUCTED - BY CSX	
TRACK TO BE REMOVED - BY NCDOT	
TRACK TO BE REMOVED - BY CSX	
COMPLETED TRACK	
STUB END TRACK - BY CSX	
CONNECTION - BY CSX	



NOTES:  
 1. ALL NEW RAIL IS 136RE UNLESS OTHERWISE NOTED  
 2. SEE PROJECT MANUAL SECTION 5 FOR PHASING NARRATIVE.

CONTRACT DESIGNATOR	WORK ELEMENT				
PHYSICAL ENTITY					
LINE ITEM					
COST ELEMENT					
PROJECT NUMBER					
REV	DATE	DESCRIPTION	BY	SUB	APP
AI	7/14/17	REVISED PHASING/CONSTRUCTION	BD	TR	

## LEVEL 4

Information confidential all plans, drawings, specifications, and/or information furnished herewith shall remain the property of the CSX Transportation and shall be held confidential and shall not be used for any purpose not provided for in agreements with the CSX Transportation.

DESIGNED BY B. DAWES  
 DRAWN BY B. DAWES  
 CHECKED BY G. MODLIN  
 APPROVED BY T. REID  
 DATE JULY 14, 2017

**CSX TRANSPORTATION, INC.** ENGINEERING DEPARTMENT  
 DESIGN & CONSTRUCTION  
 JACKSONVILLE, FLORIDA

**[CSX]**

**moffatt & nichol**  
 4700 FALLS OF NEUSE ROAD, SUITE 300  
 RALEIGH, NORTH CAROLINA 27609  
 (919) 781-4626 VOICE (919) 781-4869 FAX (F-01051)

CONTRACT NO. 54-DO-11708198  
 VAL. SEC. L-7

DRAWING NO. CG-10  
 REVISION AI SHEET NO. 10  
 SCALE 1"=60'

NCDOT CAPITAL YARD SOUTH LEAD  
 CSX S-LINE FROM  
 HARRINGTON STREET TO NCDOT CAPITAL YARD  
 RALEIGH, WAKE, NORTH CAROLINA  
 RAIL CONSTRUCTION PHASE 1A



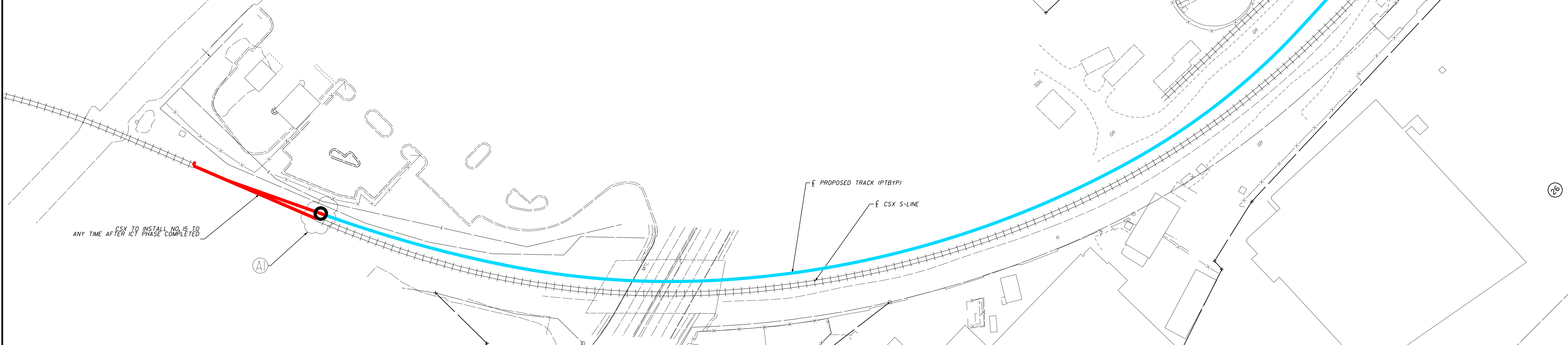
CP SOUTHERN JUNCTION, NC

CP EDGETON, NC

RR S

RR N

# PHASE 1B

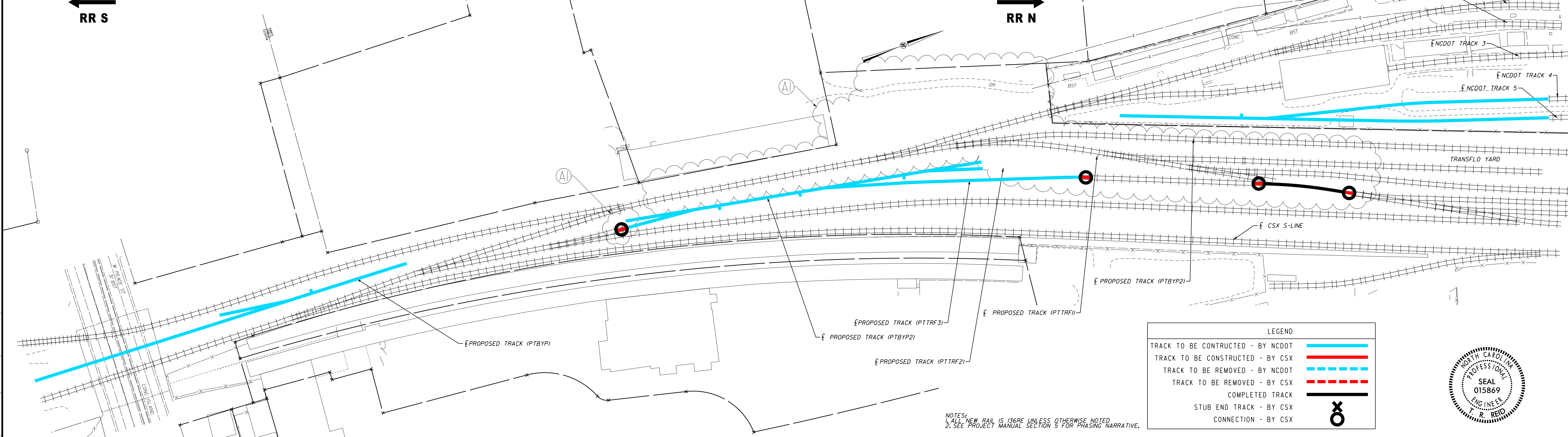


CP SOUTHERN JUNCTION, NC

CP EDGETON, NC

RR S

RR N



**LEGEND**

- TRACK TO BE CONSTRUCTED - BY NCDOT
- TRACK TO BE CONSTRUCTED - BY CSX
- TRACK TO BE REMOVED - BY NCDOT
- TRACK TO BE REMOVED - BY CSX
- COMPLETED TRACK
- STUB END TRACK - BY CSX
- CONNECTION - BY CSX



CONTRACT DESIGNATOR	WORK ELEMENT				
PHYSICAL ENTITY					
LINE ITEM					
PROJECT NUMBER					
REV	DATE	DESCRIPTION	BY	SUB	APP
AI	7/14/17	REVISED PHASING/CONSTRUCTION			
<b>LEVEL 4</b>					

Information confidential all plans, drawings, specifications, and/or information furnished herewith shall remain the property of the CSX Transportation and shall be held confidential and shall not be used for any purpose not provided for in agreements with the CSX Transportation.

DESIGNED BY B. DAWES  
 DRAWN BY B. DAWES  
 CHECKED BY G. MODLIN  
 APPROVED BY T. REID  
 DATE JULY 14, 2017

**CSX TRANSPORTATION, INC.** ENGINEERING DEPARTMENT  
 DESIGN & CONSTRUCTION  
 JACKSONVILLE, FLORIDA

**[CSX]**

**moffatt & nichol**  
 4700 FALLS OF NEUSE ROAD, SUITE 300  
 RALEIGH, NORTH CAROLINA 27609  
 (919) 781-4626 VOICE (919) 781-4869 FAX (F-01051)

VAL. SEC. L-7

CONTRACT NO. 54-DO-11708198  
 DRAWING NO. CG-11  
 REVISION AI SHEET NO. 11  
 SCALE 1"=60'

NCDOT CAPITAL YARD SOUTH LEAD  
 CSX S-LINE FROM  
 HARRINGTON STREET TO NCDOT CAPITAL YARD  
 RALEIGH, WAKE, NORTH CAROLINA

RAIL CONSTRUCTION PHASE 1B



CP SOUTHERN JUNCTION, NC

RR S

CP EDGETON, NC

RR N

# PHASE 1C

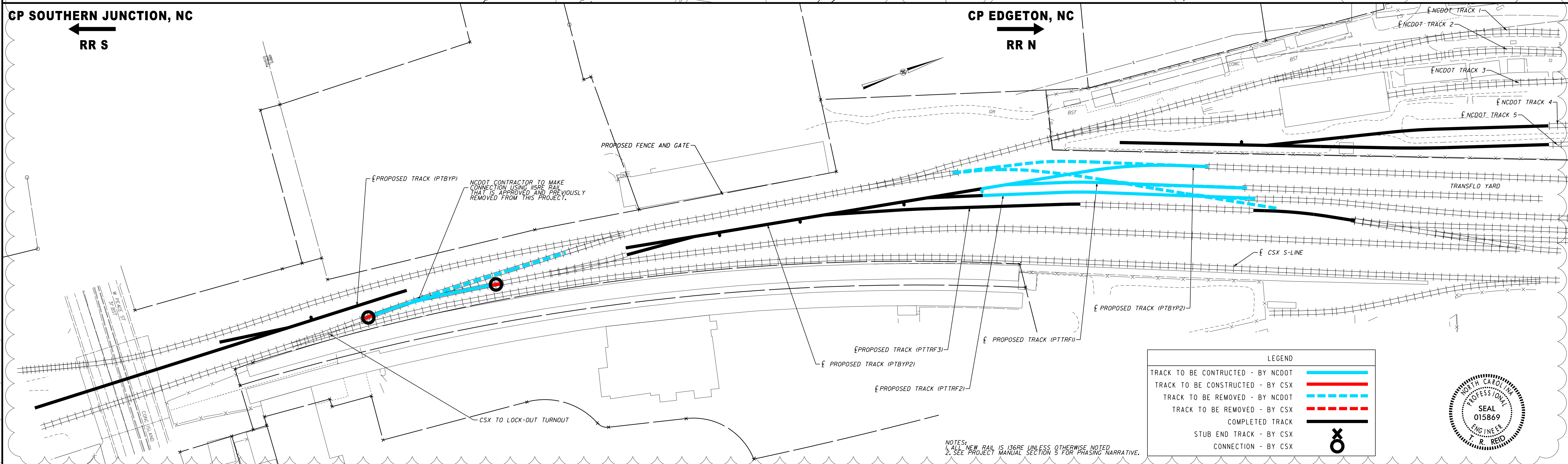
SEE ICT #2

CP SOUTHERN JUNCTION, NC

RR S

CP EDGETON, NC

RR N



CONTRACT DESIGNATOR	WORK ELEMENT				
LINE ITEM	PHYSICAL ENTITY				
COST ELEMENT					
PROJECT NUMBER					
REV	DATE	DESCRIPTION	BY	SUB	APP

AI	7/14/17	REVISED PHASING/CONSTRUCTION	BD	TR	
<b>LEVEL 4</b>					
REV	DATE	DESCRIPTION	BY	SUB	APP

Information confidential all plans, drawings, specifications, and/or information furnished herewith shall remain the property of the CSX Transportation and shall be held confidential and shall not be used for any purpose not provided for in agreements with the CSX Transportation.

DESIGNED BY B. DAWES  
 DRAWN BY B. DAWES  
 CHECKED BY G. MODLIN  
 APPROVED BY T. REID  
 DATE JULY 14, 2017

**CSX TRANSPORTATION, INC.** ENGINEERING DEPARTMENT  
 DESIGN & CONSTRUCTION  
 JACKSONVILLE, FLORIDA

**[CSX]**

**moffatt & nichol**  
 4700 FALLS OF NEUSE ROAD, SUITE 300  
 RALEIGH, NORTH CAROLINA 27609  
 (919) 781-4626 VOICEMAIL (919) 781-4869 FAX (919) 781-1051

VAL. SEC. L-7

CONTRACT NO. 54-DO-11708198  
 DRAWING NO. CG-12  
 REVISION AI SHEET NO. 12  
 SCALE 1"=60'

NCDOT CAPITAL YARD SOUTH LEAD  
 CSX S-LINE FROM  
 HARRINGTON STREET TO NCDOT CAPITAL YARD  
 RALEIGH, WAKE, NORTH CAROLINA

RAIL CONSTRUCTION PHASE 1C



CP SOUTHERN JUNCTION, NC

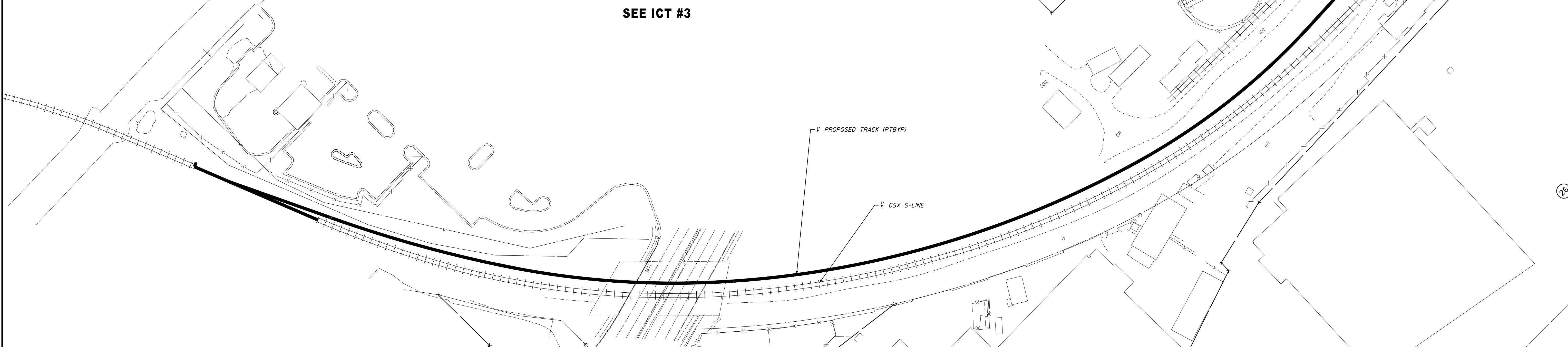
RR S

CP EDGETON, NC

RR N

# PHASE 2

SEE ICT #3

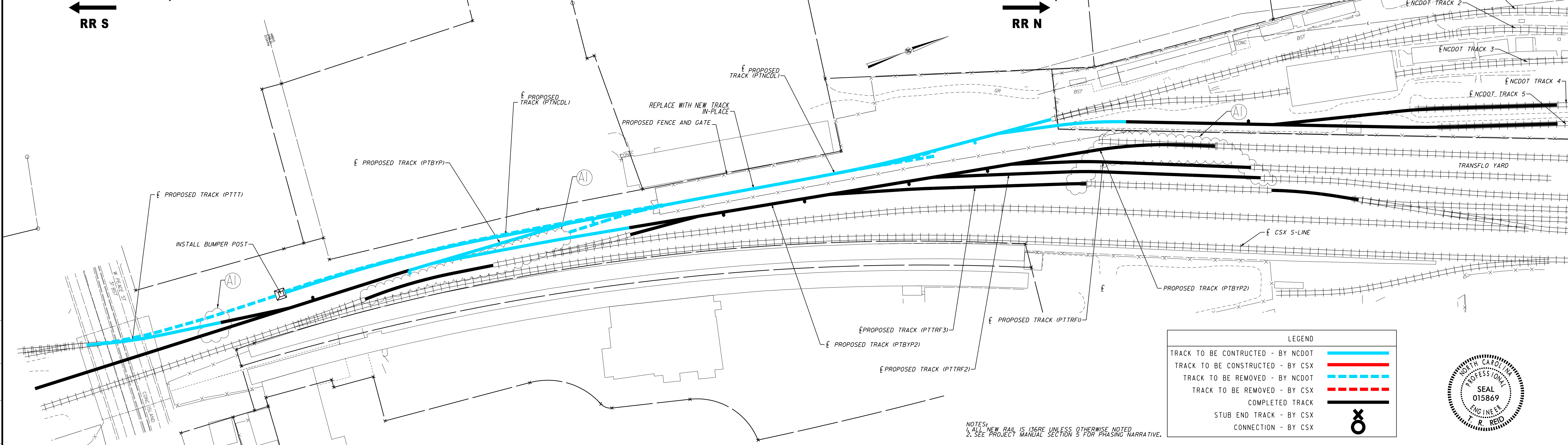


CP SOUTHERN JUNCTION, NC

RR S

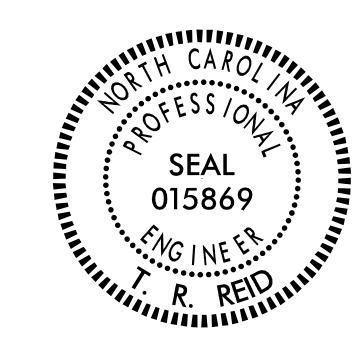
CP EDGETON, NC

RR N



LEGEND

TRACK TO BE CONSTRUCTED - BY NCDOT	
TRACK TO BE CONSTRUCTED - BY CSX	
TRACK TO BE REMOVED - BY NCDOT	
TRACK TO BE REMOVED - BY CSX	
COMPLETED TRACK	
STUB END TRACK - BY CSX	
CONNECTION - BY CSX	



NOTES:  
 1. ALL NEW RAIL IS 136RE UNLESS OTHERWISE NOTED.  
 2. SEE PROJECT MANUAL SECTION 5 FOR PHASING NARRATIVE.

CONTRACT DESIGNATOR	WORK ELEMENT				
PHYSICAL ENTITY					
LINE ITEM					
COST ELEMENT					
PROJECT NUMBER					
REV	DATE	DESCRIPTION	BY	SUB	APP
AI	7/14/17	REVISED PHASING/CONSTRUCTION	BD	TR	

## LEVEL 4

Information confidential all plans, drawings, specifications, and/or information furnished herewith shall remain the property of the CSX Transportation and shall be held confidential and shall not be used for any purpose not provided for in agreements with the CSX Transportation.

DESIGNED BY B. DAWES  
 DRAWN BY B. DAWES  
 CHECKED BY G. MODLIN  
 APPROVED BY T. REID  
 DATE JULY 14, 2017

**CSX TRANSPORTATION, INC.** ENGINEERING DEPARTMENT  
 DESIGN & CONSTRUCTION  
 JACKSONVILLE, FLORIDA

**[CSX]**

**moffatt & nichol**  
 4700 FALLS OF NEUSE ROAD, SUITE 300  
 RALEIGH, NORTH CAROLINA 27609  
 (919) 781-4626 VOICE (919) 781-4869 FAX (F-01051)

VAL. SEC. L-7

CONTRACT NO. 54-DO-11708198  
 DRAWING NO. CG-13  
 REVISION AI SHEET NO. 13  
 SCALE 1"=60'

NCDOT CAPITAL YARD SOUTH LEAD  
 CSX S-LINE FROM  
 HARRINGTON STREET TO NCDOT CAPITAL YARD  
 RALEIGH, WAKE, NORTH CAROLINA  
 RAIL CONSTRUCTION PHASE 2